

# HAMMAR LIFEBOUY RELEASE SYSTEM

## IF IT SAVES YOUR LIFE ONCE, IT'S A BARGAIN

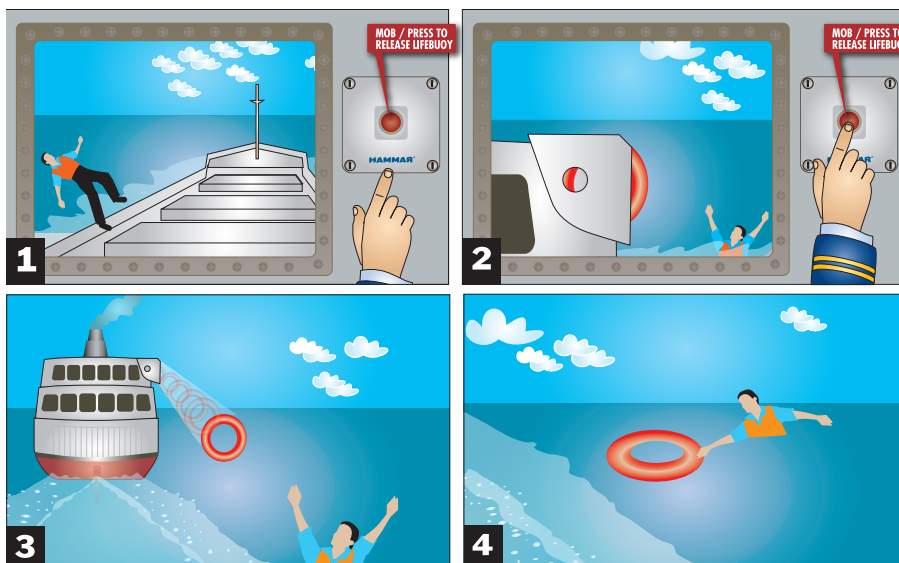


### The Hammar Lifebuoy Release System

The time it takes to launch a lifebuoy can be the difference between life and death, when someone falls overboard from a ship or vessel. Most lifebuoys are installed in a holder on the bridge wing or a similarly remote location, to which access may take time.

The Hammar lifebuoy system is a complete, easy-to-fit package for the rapid launch of lifebuoys onboard a ship. After activation, stainless steel lever is removed by a strong spring in order to ensure the safe, rapid deployment of the system.

For a ship yard, the system offers easy installation and trouble-free sourcing, as all parts are delivered in a complete package. The system is cost-effective, not only because it saves time but, more importantly, it may even save lives.



### Features:

- Safe and quick operation to save lives
- Electric activation from the bridge
- One complete package
- Easy and quick installation onboard
- Economical solution

**LIFEBUOY SYSTEM Mk II**

The Hammar Lifebuoy Release System consists of:

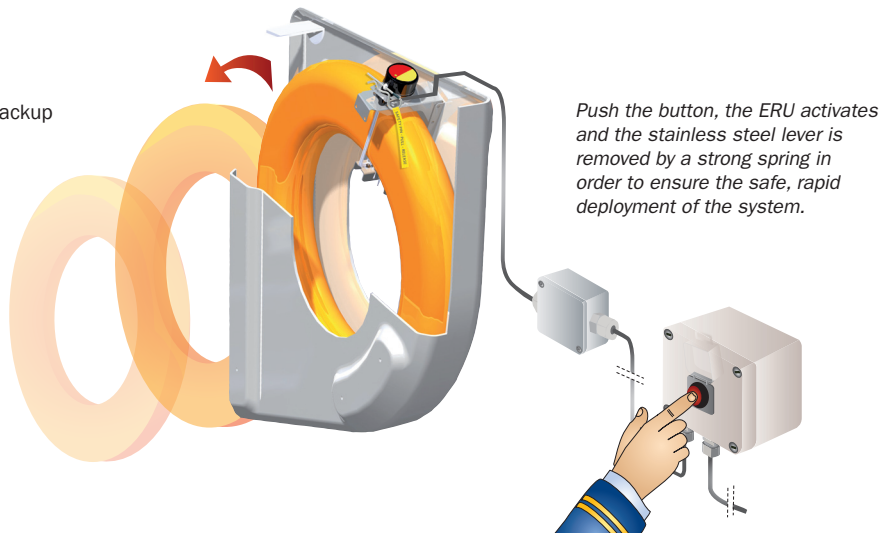
- GRP holder with metal spring holder and manual backup
- Hammar ERRS remote activation package

Note:

The GRP holder is double-sided and can therefore be mounted on either starboard or port side.

Lifebuoy not supplied from CM Hammar.

MOB signal can be mounted. Please follow the mounting instructions from the MOB manufacturer.



**LIFEBUOY SYSTEM COMPONENTS**

Part no.

HM-0600 Lifebuoy System Mk II complete package for electric remote release includes:

- GRP holder with pre-installed metal holder and bracket.
- ERU (electric remote unit) with cord pre-installed on metal holder.
- Release Switch
- Connector box
- 20m cable from connector box to release switch, screened 2 x 0,75mm<sup>2</sup>, diameter 8mm
- Manual safety pin
- Pilot line for loading the lifebuoy
- Installation manual
- User Guide
- Marking instruction

Not supplied in the kit from CM Hammar:  
- Lifebuoy  
- Mounting bolts for the installation onboard

HM-0610 Lifebuoy System Mk II complete package for manual release only – with GRP holder, metal spring holder, manual safety pin and release cord and installation manual in English.

Note: Lifebuoy not supplied from CM Hammar.



**SPARE PARTS**

Part no.

HM-0620 Lifebuoy System metal spring holder only



HM-0406 Replacement kit lifebuoy system Mk I – ERU electric/water activation, with release cord, metal ring, cable tie and installation manual in English. The ERU shall be changed every two years in order to have the same service interval as liferafts and Epirbs.



HM-0630 Replacement kit lifebuoy system Mk II – ERU electric/water activation, with release cord and installation manual in English. The ERU shall be changed every two years in order to have the same service interval as liferafts and Epirbs.



**Following comprehensive product information may be downloaded at [www.cmhammar.com](http://www.cmhammar.com)**

- Lifebuoy Product Information
- Lifebuoy Installation Manual
- BV Attestation